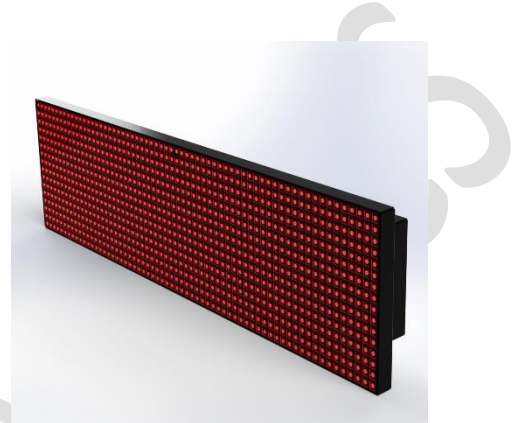


Function:

UFD is used to indicate the payable toll fare to the road user and when the payment has been made, the publicity message can be shown. The main function of User Fare Display is to inform the driver of the vehicle classification entered by the toll collector and the toll to be paid. It shall also convey low balance warnings, traffic safety messages, public relations and seasonal messages.

**Features:**

- Synchronize with Toll Lane Computer
- Message visibility and legibility are excellent even under bright ambient lighting conditions.
- Uses super Bright Red LEDs
- Uses powder coated mild steel Housing

Technical Specifications:

LED Color	Red
No. Of LED	1024
LED Size	5 mm
Intensity	8000 mcd
Viewing Angle	30°
Display size	640mm (w) x 160mm (H)



SAGAR ELECTRONICS

Email : electronics.sagar@gmail.com

Characters	Number of Lines- 2 Lines Character per line- 13 characters Minimum Character height- 70 mm Minimum Character width- 50mm
Pixel Pitch	10 mm
Communication	RS232 / Ethernet (both option available)
Power Supply	230V AC / 50Hz
Power Consumption	50W
LED reliability	> 100000 hours
Dimension	642 mm (W) x 162mm (H) x 80mm (D) \pm 8 %
Mounting arrangement	Swivel type from bottom or Pole Mounting
Weight	5 kg 2approx.
Operating Temperature	5 ⁰ C to + 70 ⁰ C
IP Rating Enclosure	IP 65
Make	Sagar Electronics
Model number	SE-1002

Head Office: E-11, Vishwakarma colony MB Road New Delhi – 110044 (INDIA)